



COLORADO

Department of
Transportation

10 Year Development Program

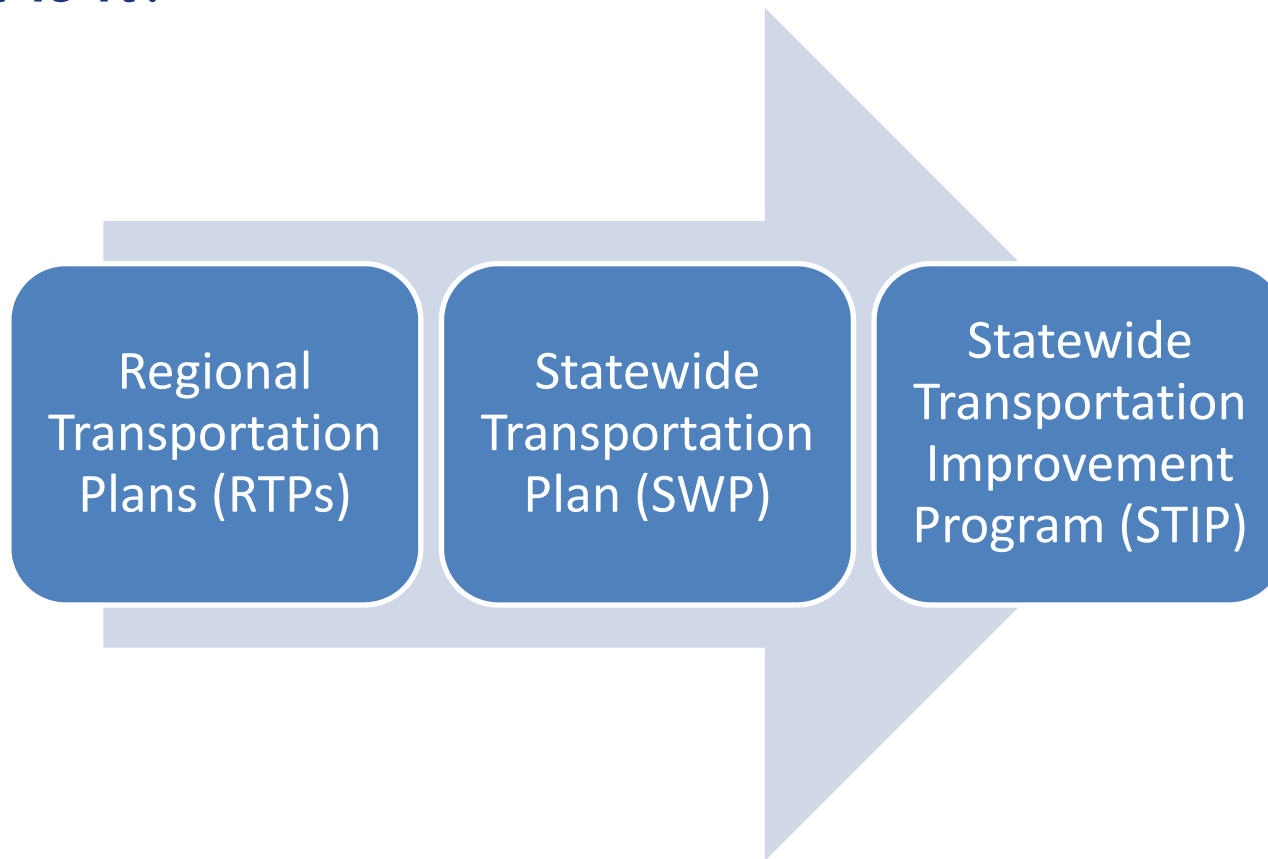
Transportation Commission

November 18, 2015 ₁



Development Program

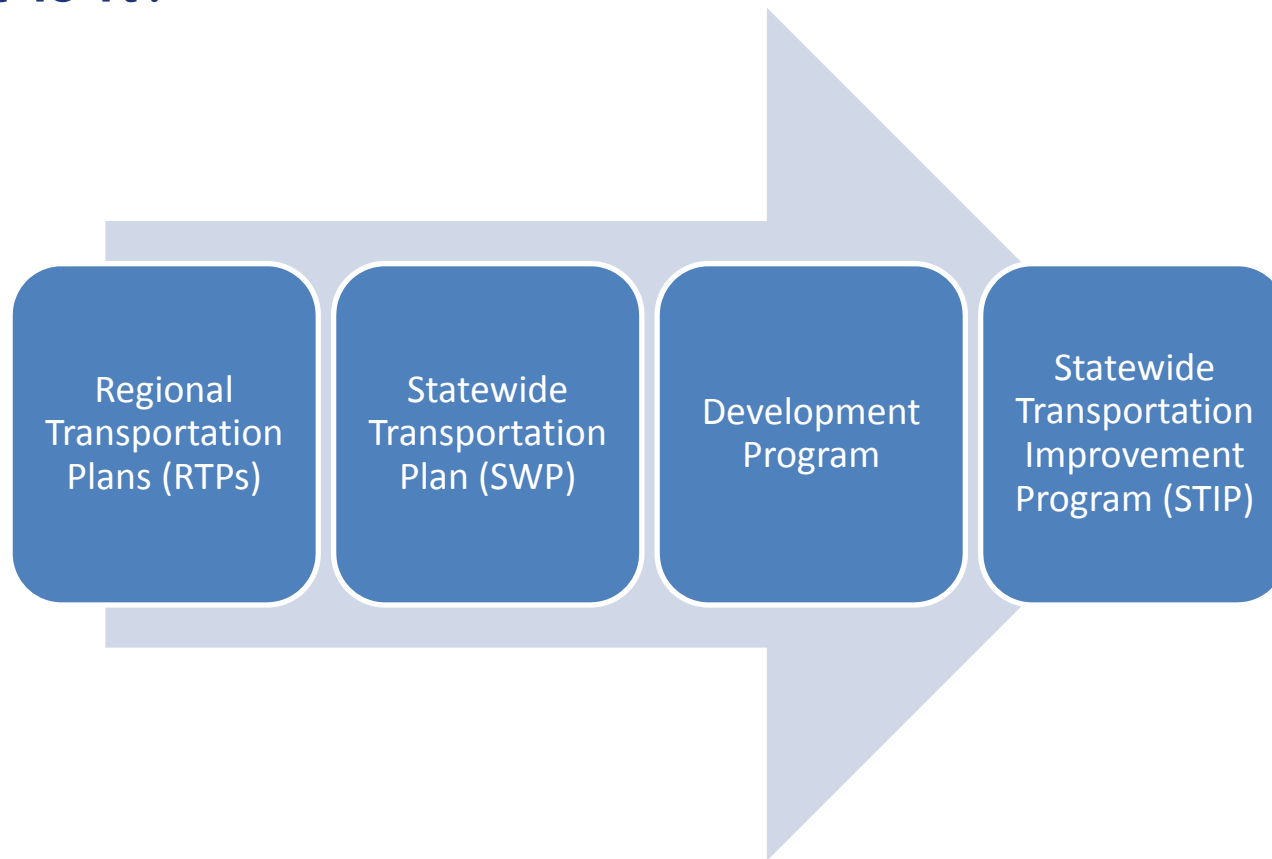
What is it?





Development Program

What is it?





Development Program

Purpose

- ***To identify the needs for major investments and the priorities over a 10 year timeframe.***

Major Investments are *investments of significant cost or scope* which cannot typically be funded through a single funding source, and which may require additional revenue or other funding sources to fully complete.

The Development Program reflects the *priorities identified through the transportation planning process*, in the Regional Transportation Plans, and other modal and functional plans.

The Development Program is a tool, not a commitment or a decision on what we do in the future. It's *what we might do* if we received additional revenue, or what we might do incrementally with current revenues.



Development Program

Why have a Development Program?

- The Development Program provides a solution for:
 - Scattered and incomplete information on major investments beyond the STIP
 - Lack of consolidated information to discuss major investments *across* the state
 - Lack of public friendly information
 - Repeated development of new “lists” for different purposes
 - Limited ability to track major investments as they move from a conceptual project to construction
 - Limited information on the cost of long-term enhancements or expansion to the system



Development Program

Where does this fit in the planning process?



In the future, the Development Program will be developed in tandem with the SWP, RTPs, and STIP.

The Development Program does:

- Inventory major investment needs (Database of Needs)
- Reflect unprogrammed future projects or phases
- Serve as a resource to identify potential projects

The Development Program doesn't:

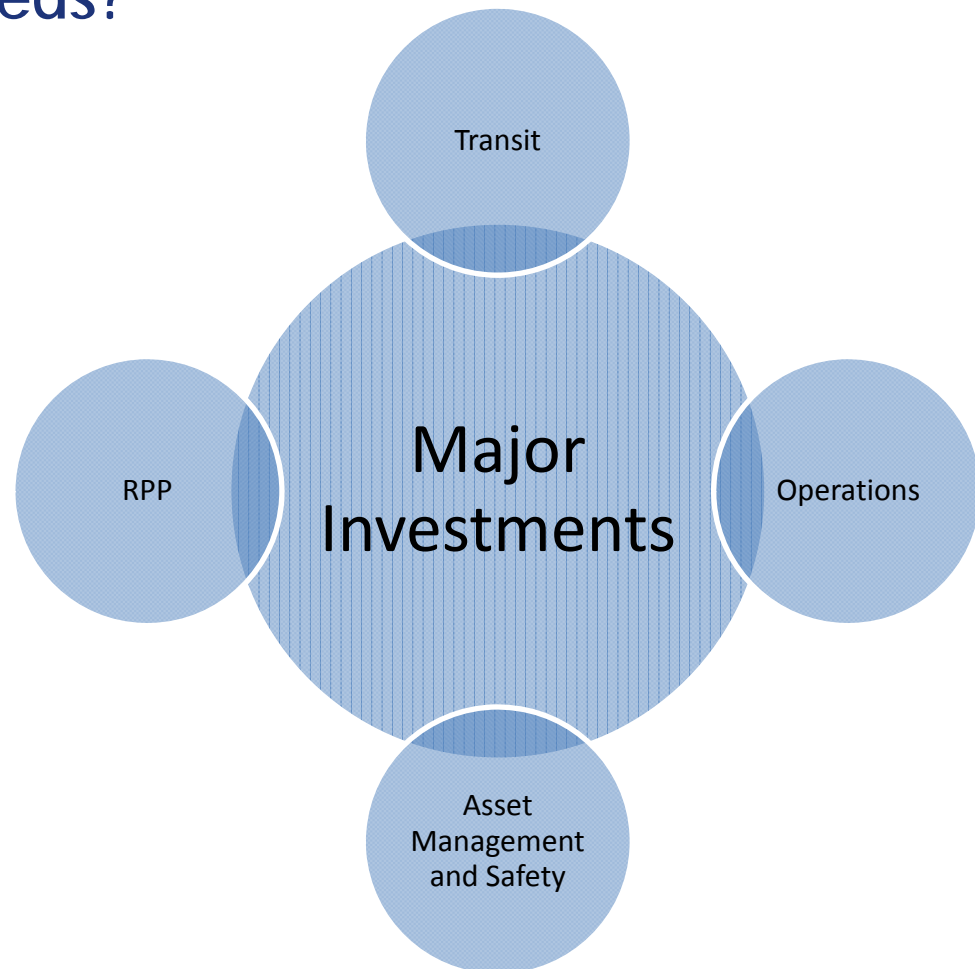
- Program projects
- Assign funds
- Include all unprogrammed projects or phases
- Require that projects be included to be in STIP



Development Program

What about other needs?

The Development Program will not identify in detail every potential project, but will include information at a more programmatic level for other needs including RPP, Asset Management, Safety, Operations, and Transit.





Development Program

How will this be used?

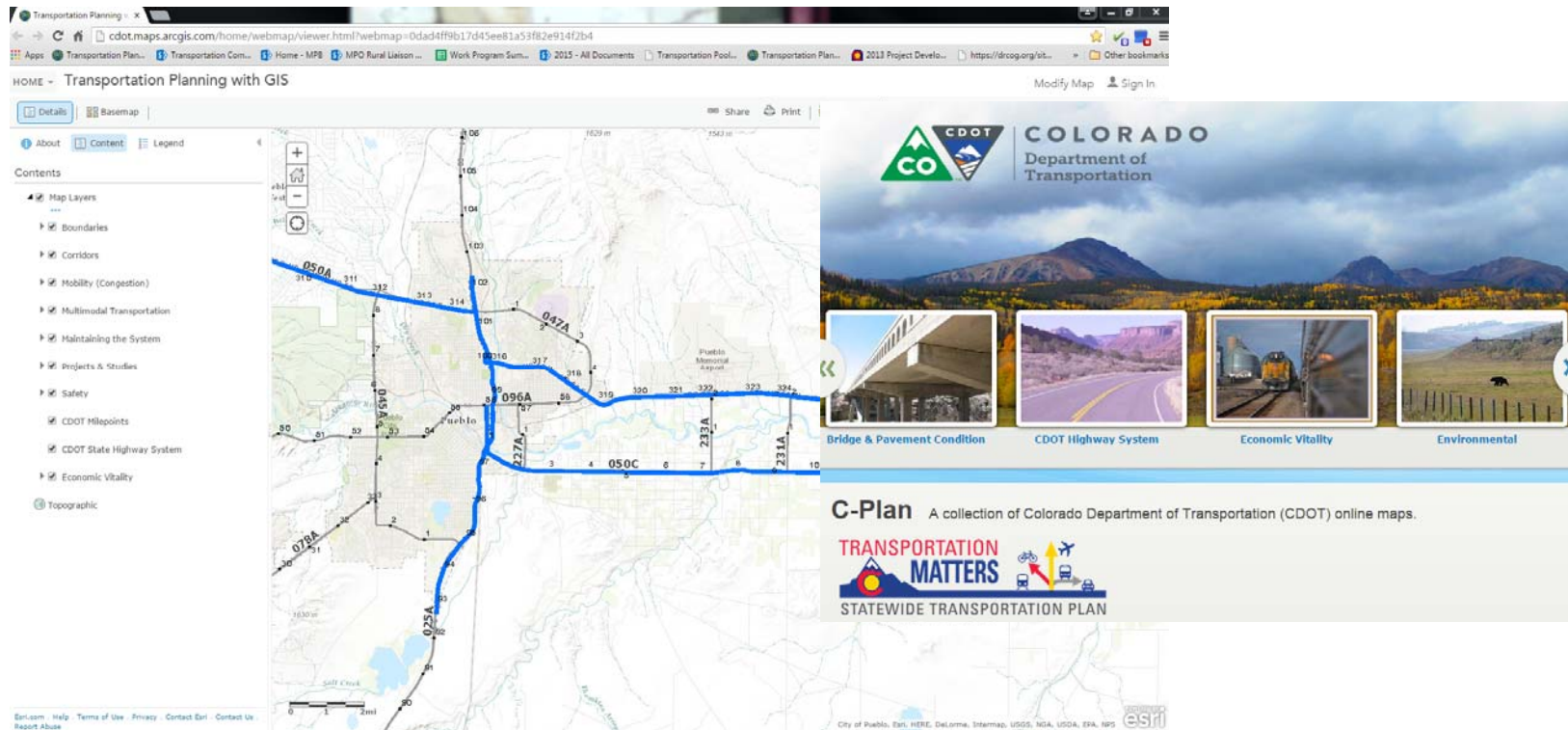
1. Communicate information about major investments and other needs to the public and stakeholders
2. Provide a guide to needs and priorities to inform TIP, STIP, and RTP development, and other project selection, design, or development decisions
3. Provide a resource for prioritizing or phasing projects if significant additional revenue were to become available, and for future “list” development exercises
4. Provide a tool to aid in identifying and quantifying transportation needs to support planning and programming processes



Development Program

How will this be used?

1. Communicate information about major investments and other needs to the public and stakeholders



EXAMPLE - DEVELOPMENT PROGRAM PROJECT / CORRIDOR PROFILE



Corridor/Project: I-25 New Pueblo Freeway

Limits: MP 94 (south of Pueblo Blvd.) to MP 101 (south of US 50/SH 47 Interchange)

Study Status: FEIS completed September 2013. Phase I ROD in April 2014.

Improvement Status: Improvements between Ilex and City Center Dr. under construction.

Corridor Designations: NHS; Regional Priority Investment Corridor; Freight Corridor

Region: 2

Transportation Commission District: 10

TPRs: Pueblo Area

Counties: Pueblo

SWP Goal Areas: Mobility, Maintaining the System, Safety

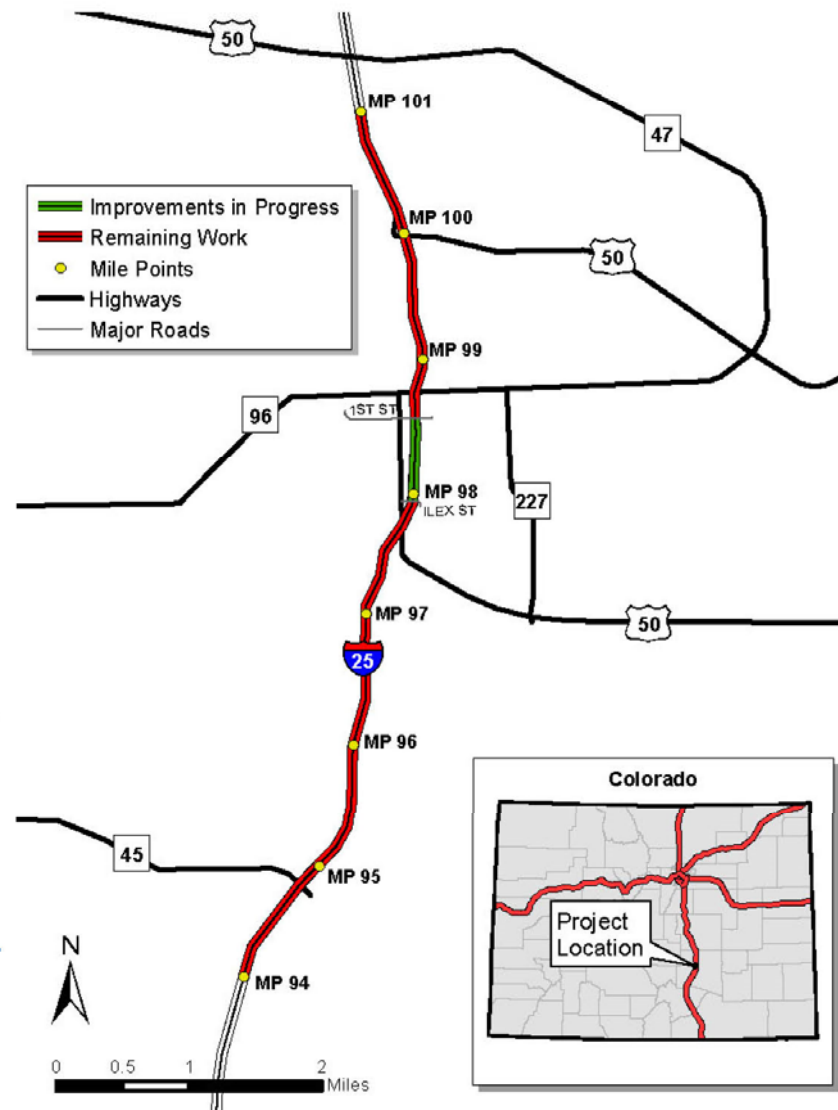
SWP Strategies: Capacity, System Preservation, Safety, Operations, Freight, Bicycle/Pedestrian, Economic Vitality

Corridor/Project Website:

https://www.codot.gov/library/studies/i25_puebloeis

Corridor/Project Map:

<http://arcg.is/1P8gyAa>

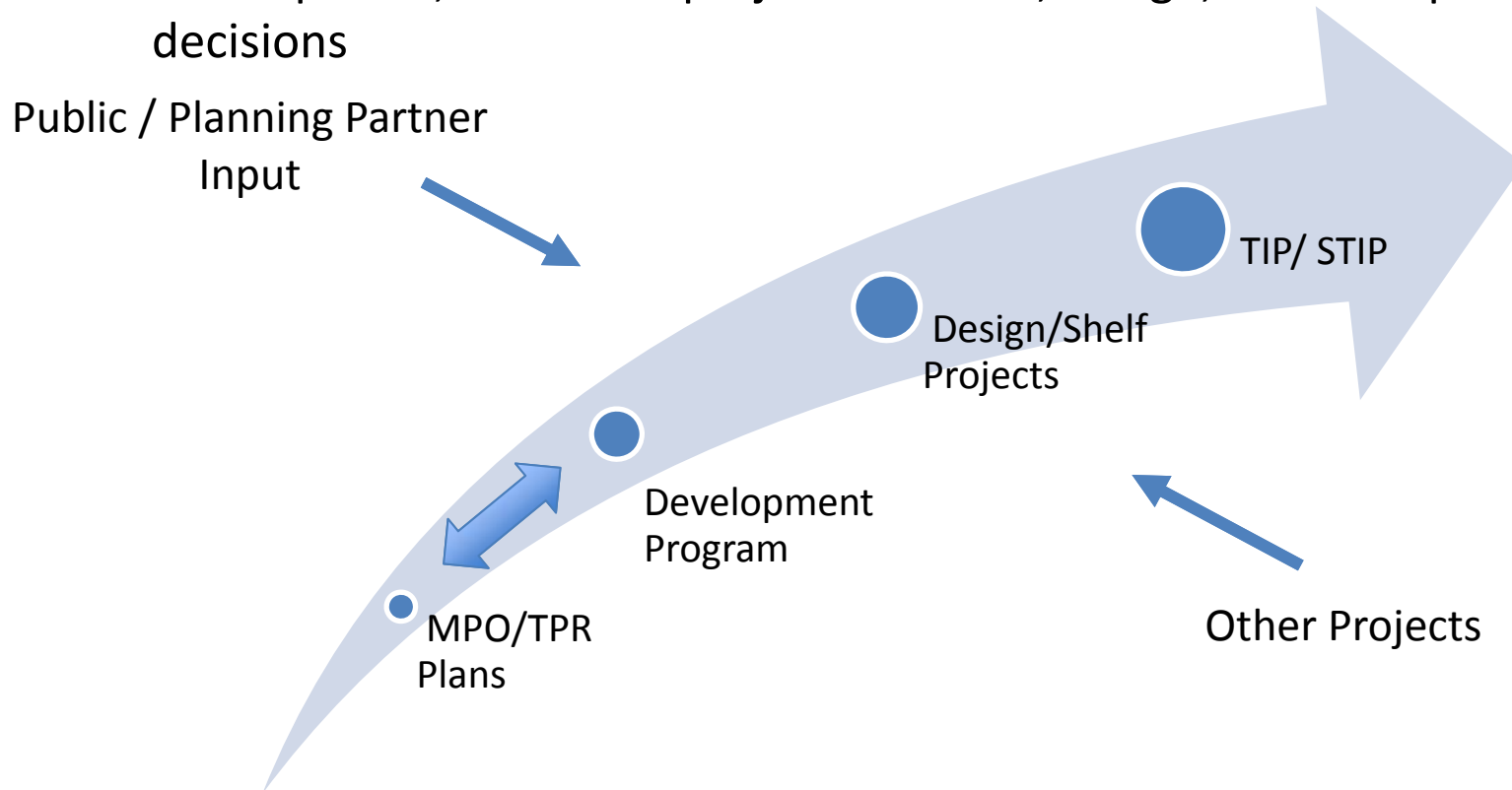




Development Program

How will this be used?

2. Provide a guide to needs and priorities to inform TIP, STIP, and RTP development, and other project selection, design, or development decisions





Development Program

How will this be used?

3. Provide a resource for prioritizing or phasing projects if significant additional revenue were to become available, and for future “list” development exercises

Serves as a “starting point” in identifying projects

Project attributes help to identify potential projects

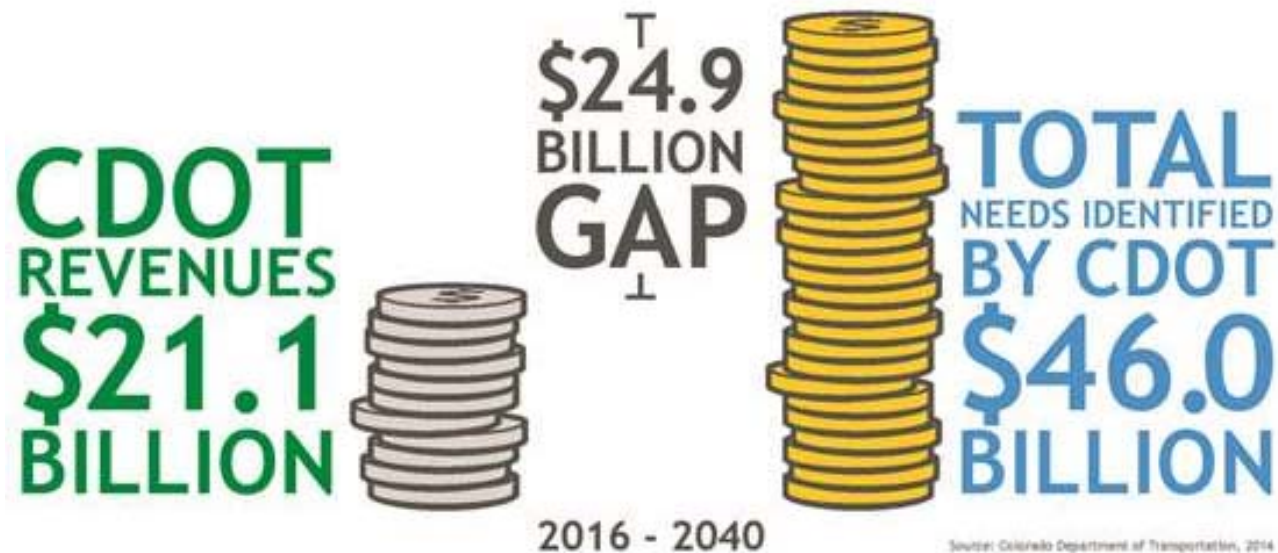
- Project Type/Elements (bridge, bike/ped, safety, etc.)
- Needs (congestion, poor pavement, structures, etc.)
- Corridor/Facility Type (NHS, Freight Corridor, etc.)



Development Program

How will this be used?

4. Provide a tool to aid in identifying and quantifying transportation needs to support planning and programming processes





Development Program

Next Steps

- Continue to work with Regions to finalize Development Program information, and to assemble and organize data
- Obtain planning partner review and input
- Develop resources to communicate information
- Update Development Program periodically to keep current
- New Development Program to be developed as part of transportation planning process and used in the development of SWP, RTPs, and STIP